

CERTIFICATE OF LOCATION OF GOVERNMENT CORNER

EAST QUARTER Corner of Section 3, Township 108, Range 40, 5TH P.M.

STATE OF MINNESOTA, County of MURRAY

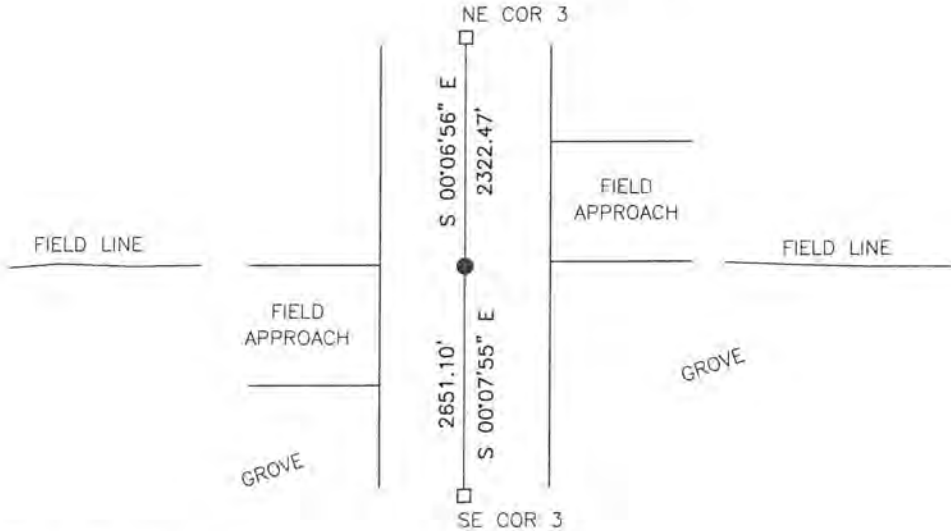
At the corner location shown on the sketch:

On 7/29/15 found a mag nail

left monument as found, lowered monument, removed monument (explain)

On _____ placed a _____

SKETCH OF REFERENCE TIES



Minnesota State Plane Coordinate
 System Murray County Datum
 NAD83 (1996)
 N: 224282.612
 E: 537731.086

Statement of evidence relative to this corner location is on back of page.

I hereby certify that this document and the data contained herein was prepared by me or under my direct supervision.

[Signature] 3/22/16
 SIGNATURE DATE

Registration No. 43844

- Land Surveyor, Professional Engineer
- County Surveyor, County Engineer

OFFICE OF THE COUNTY RECORDER

County of MURRAY

I hereby certify that this document was filed in the Co. Recorders office at 11:00 A. on the 18TH day of OCTOBER A.D. 2016

County Recorder Evelyn C. Larson

By _____, Deputy

DOCUMENT NO. _____

Statement of Evidence

In 1861, Lewis Brockman did the original subdivision of the township.

On May, 1899, J.W. Woolstencroft recorded a 12"x'12"x30" stone at the corner.

On June 18, 1971, Murray County Highway Department found a iron pipe at the corner. They set a steel pin over the iron pipe.

On June 2, 2015, Murray County Highway Department located a strong signal with a metal locator. They set a mag nail at the strong signal at the surface of the road.

On July 29, 2015, Bueltel-Moseng Land Surveying found a mag nail at the corner, it matched 1971 county ties.